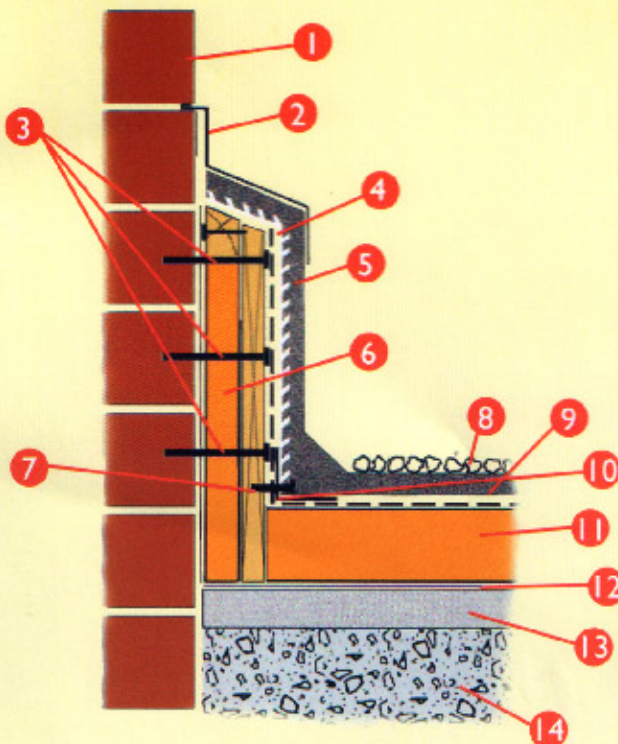


- 1) METAL FLASHING
- 2) TIMBER FILLET
- 3) SUITABLE INSULATION
- 4) EXPANDED METAL LATHING ON SHEATING FELT
- 5) FIXING
- 6) THREE COAT MASTIC ASPHALT 20mm
- 7) PLYWOOD (MINIMUM 20mm THICK)
- 8) VAPOUR BARRIER
- 9) TWO COAT MASTIC ASPHALT 20m m
- 10) SHEATING FELT
- 11) TIMBER/METAL DECK
- 12) METAL ANGLE FIXED TO DECK
- 13) SUITABLE CLOSURE
- 14) HEAVY DUTY SEALING STRIP



- 1) BRICKWORK
- 2) METAL COVER FLASHING
- 3) FIXING
- 4) EXPANDED METAL LATHING ON SHEATING FELT
- 5) MINIMUM 150mm HIGH 20mm THREE COAT SKIRTING WITH ANGLE FILLET AND SOLAR REFLECTIVE PAINT
- 6) INSULATION
- 7) PLYWOOD (MINIMUM 20mm THICK)
- 8) SOLAR REFLECTIVE FINISH
- 9) TWO COAT MASTIC ASPHALT 20m m
- 10) SUITABLE CLOSURE SECURED TO PLYWOOD
- 11) INSULATION
- 12) VAPOUR BARRIER
- 13) SAND AND CEMENT SCREED TO FALLS
- 14) CONCRETE DECK