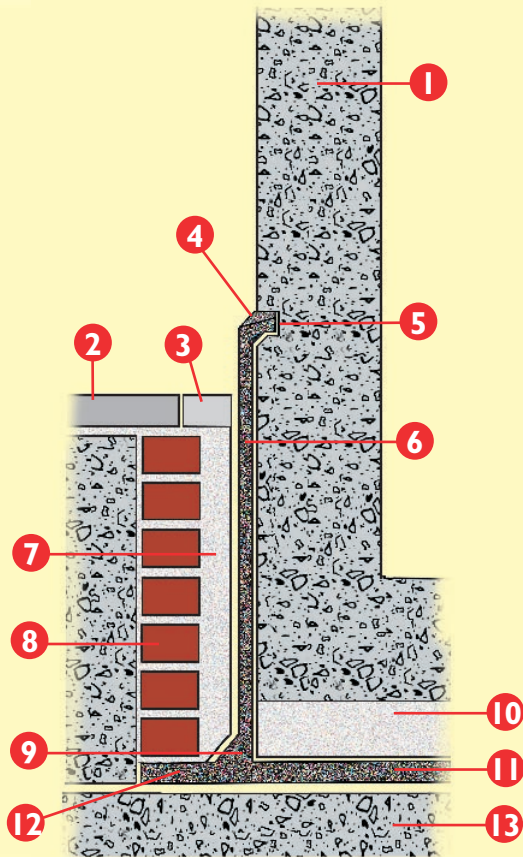


Typical specifications

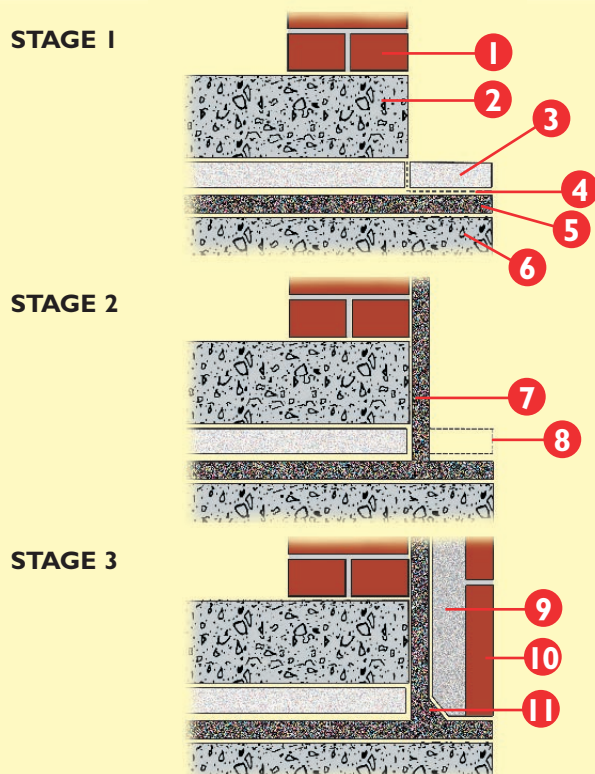
1 Externally applied mastic asphalt tanking to concrete



- 1) REINFORCED CONCRETE STRUCTURAL WALL AND FLOOR
- 2) GROUND LEVEL
- 3) PAVING SLABS KEPT BACK 75MM AND GAP FILLED WITH GRAVEL FOR SUITABLE SOFT FILLER
- 4) CEMENT MORTAR POINTING
- 5) 25MM X 25MM CHASE CAST IN CONCRETE
- 6) 20MM THREE COAT MASTIC ASPHALT WITH FILLET TO HORIZONTAL
- 7) 40MM SPACE FLUSHED UP WITH MORTAR (COURSE BY COURSE)
- 8) PROTECTING WALL
- 9) TWO COAT ANGLE FILLET
- 10) 50MM PROTECTIVE SAND AND CEMENT SCREED
- 11) 30MM THREE COAT MASTIC ASPHALT
- 12) 150MM PICK UP (SEE DETAIL 2)
- 13) CONCRETE BASE

TANKING

2 Externally applied mastic asphalt tanking: detail of 'pick up'



- 1) STRUCTURAL BRICKWORK
- 2) REINFORCED CONCRETE LOADING COAT
- 3) 50MM PROTECTIVE SAND AND CEMENT SCREED
- 4) BUILDING PAPER (UNDER PICK UP ONLY)
- 5) 30MM THREE COAT MASTIC ASPHALT
- 6) CONCRETE BASE
- 7) 20MM THREE COAT MASTIC ASPHALT
- 8) REMOVAL OF PROTECTIVE SCREEDS
- 9) 40MM SPACE FLUSHED UP WITH MORTAR (COURSE BY COURSE)
- 10) PROTECTING WALL
- 11) TWO COAT ANGLE FILLET